

HARDING TRAFFIC



HTL LED PEDESTRIAN CROSSING BELISHA

Model: TL BELISHA

☎ 0800 427 346 ✉ sales@hardingtraffic.co.nz

About Us

At Harding Traffic, we are more than just a company; we are pioneers in traffic control solutions with a rich history dating back to 1966 when Harding Signals was incorporated. This marked our venture into electronic traffic signals.

In 1997, our area of operations moved away from Traffic Signals and into Electronic Signage and Traffic Management Systems. To reflect this, we changed our name to Harding Electronic Signals Ltd. Harding Traffic's integration into the Traffitech Group in 2007 marked a new era of growth, joining a group of companies boasting a robust financial standing with \$45 million in revenue, assets exceeding \$20 million, and a dedicated team of 180 staff and 6 locations across New Zealand.



Our journey has been marked by a steadfast dedication to innovation and quality, leading the charge in traffic control technology. With 1000's of the country's traffic signs installed by Harding Traffic over 27 years, our impact is undeniable. Yet our ambition extends beyond electronic traffic signs; we've become a comprehensive provider of traffic management/warning systems, car park solutions, integrated traffic management solutions, data capture and analytics along with so much more. We are committed to enhancing urban infrastructure with our cutting-edge solutions.

Today, Harding Traffic stands as a testament to over 50 years of expertise in the traffic industry. Our capabilities extend across the design, manufacture, and installation of high quality, specialised traffic systems. This includes everything from Motorway signs and School Zone signs to Rural Interchange Advance Warning Signs, Illuminated Road Stud technologies, car park systems, electronic warning systems and off-street signage. We take pride in serving a diverse clientele that includes NZTA, local Councils and authorities, commercial entities and contractors.

Quality Guaranteed

Harding Traffic holds AS/NZS 4801 Health and Safety Management certification, ISO 9001 manufacturing quality certification and ISO 14001 Environmental Management System certification. These certifications represent Harding's commitment to providing a consistently high level of service, delivery quality products based on sound management and process controls.

Standard Features

PEDESTRIAN CROSSING BELISHA

Our LED Belisha Discs offer an innovative and highly visible pedestrian crossing solution. Designed for maximum road safety, both day and night, these internally illuminated discs feature:

- **Energy-efficient LEDs** with up to 50,000 hours of life
- **High visibility** with a fluorescent orange retro-reflective surface when not illuminated, complying with the WU4/PW-65 standard
- **Compact power supply** for easy installation in roadside cabinets or streetlight pole bases
- **Flexible mounting options** (top or side mount)
- **Synchronized flashing** when multiple discs are installed at pedestrian crossings, enhancing visibility and safety for all users



Sustainability and Road Safety Combined

Our Belisha Discs are designed with both performance and sustainability in mind, offering:

- Low power consumption
- Environmentally friendly design
- Reduced carbon footprint
- Improved pedestrian safety across various visibility conditions

SPECIFICATIONS

Operating voltage:	12V - 5 to 11Amp (depending on setup)
Wattage:	25 to 30 watts (depending on setup)
Operating temperature:	-10°C - 50°C
Humidity:	All
Construction:	Aluminium Powder-coated Casing

Easy Installation & Configuration

Whether top or side mounted, our Belisha Discs are straightforward to install. A registered electrician can easily manage the setup, while the compact power cable runs through the mounting bracket and down the pole, ensuring a clean and professional finish.

Operational Options

SINGLE BELISHA POWER SUPPLY

When installing a single Belisha Disc, our **Single Power Supply** with Flasher option offers a cost-effective and streamlined solution. It includes a compact 5A power Supply with flasher that ensures the Belisha operates efficiently, providing consistent visibility and enhanced pedestrian safety. Ideal for standalone crossings or smaller-scale installations



DUAL BELISHA POWER SUPPLY

Seamless Synchronization with Our **Dual Power Supply** for Two Belisha Discs. Featuring an 8.5A Power Supply with flasher, this system is designed to power two Belisha Discs in perfect synchronization, ensuring a highly visible, attention-grabbing flash pattern.



TRIPLE BELISHA POWER SUPPLY

For larger pedestrian crossings or high-traffic areas, the **Triple Power Supply** offers unmatched visibility and safety. This 11A flasher powers three Belisha Discs in perfect synchronization, ensuring all-around coverage and maximum attention for pedestrians and drivers alike



Additional Options

TOP MOUNTING BRACKET (TL BELISHA-TB)

Easily secure your Belisha Disc with our **Top Mounting Bracket**, designed for quick and hassle-free installation on pedestrian poles. This bracket provides a stable, reliable connection that ensures your Belisha Disc remains firmly in place, enhancing both performance and safety. Its durable construction guarantees long-lasting use, making it a trusted choice for top-mounted installation



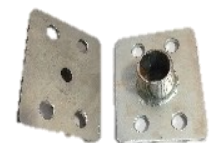
MALE MOUNTING ADAPTOR (TL BELISHA-MB)

Our **Male Mounting Adaptor** is designed to seamlessly connect two female brackets, offering a simple and secure solution for your Belisha installation.



SIDE MOUNTED BRACKET (TL BELISHA-SB)

Maximize the placement of your Belisha Disc with our **Side Mounting Bracket**. This sturdy bracket allows for secure side-mounting on poles, providing enhanced flexibility in installations where a top mount isn't suitable. Built for durability and ease of installation, the Side Mounting Bracket is an excellent choice for optimizing visibility in a variety of settings.



PEDESTRIAN POLE (MO PC06130)

Our **Pedestrian Poles** are the perfect complement to your Belisha installation. Designed for pedestrian and school zone crossings, these 76mm diameter, 3.6m long poles are crafted for strength and reliability. Featuring a clean white end cap for a professional finish, they offer the ideal support for Belisha Discs and ensure consistent performance in any environment.

